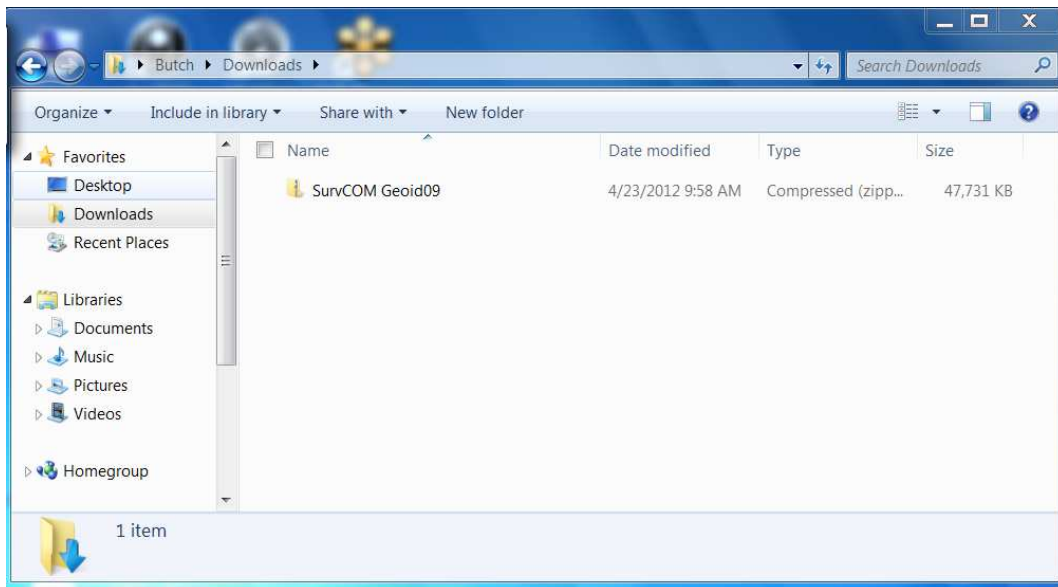
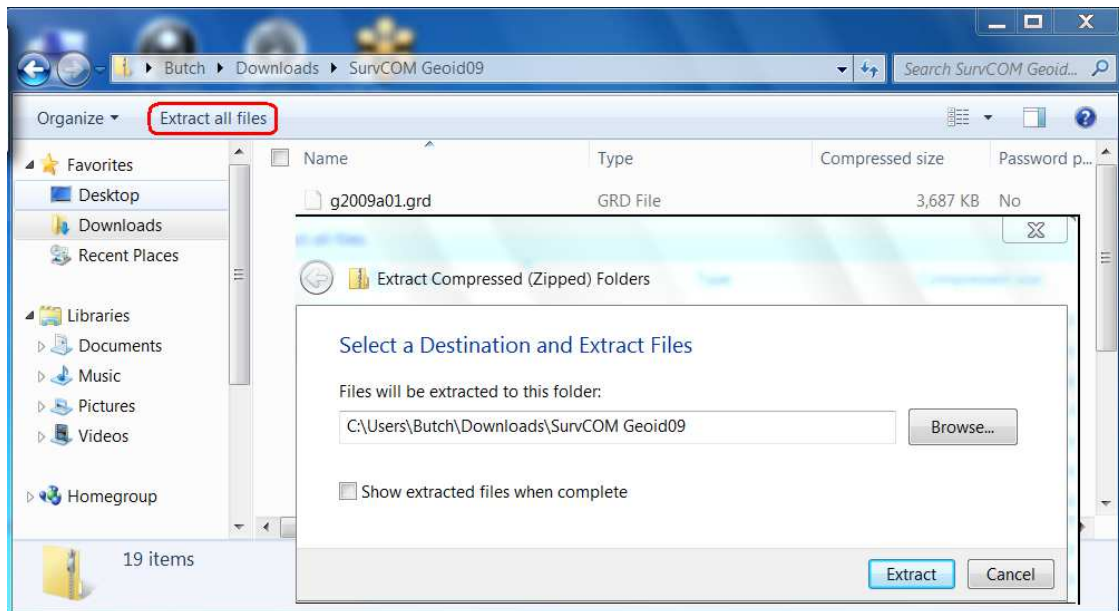


Click the link below to download the file "Geoid2012A.zip" to the Downloads folder of your tablet. Then, double-tap the file to open it.

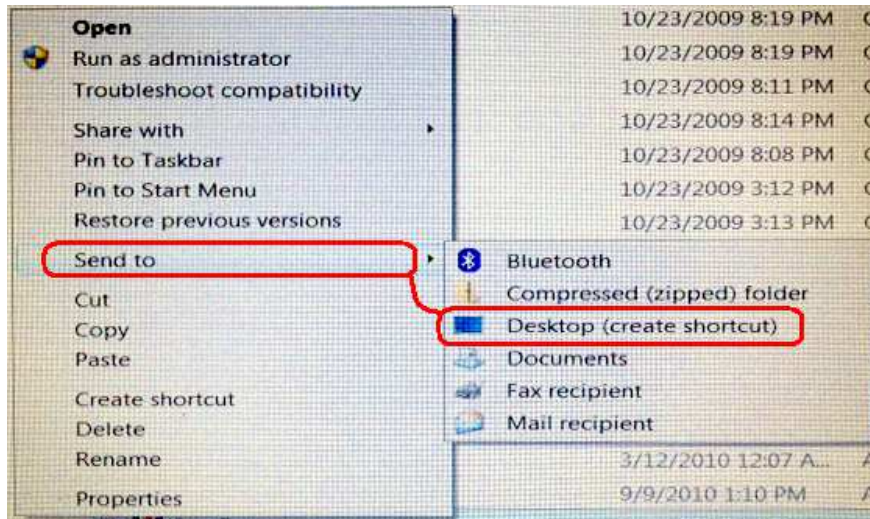
[Carlson Geoid 2012A](#)



1) Once inside the file, Extract All Files into its own Folder in your Downloads folder.



- 2) Open the unzipped "Geoid2012A" folder we created in Step # 2. Search for the SurvCom.exe file, but DO NOT double-click on it. Tap it ONCE to highlight it. Then, hold your stylus down on the selection until an "options box" opens. Select **Send To...Desktop (create shortcut)**. This will give you easy access to SurvCOM for geoids which you may create in the future.



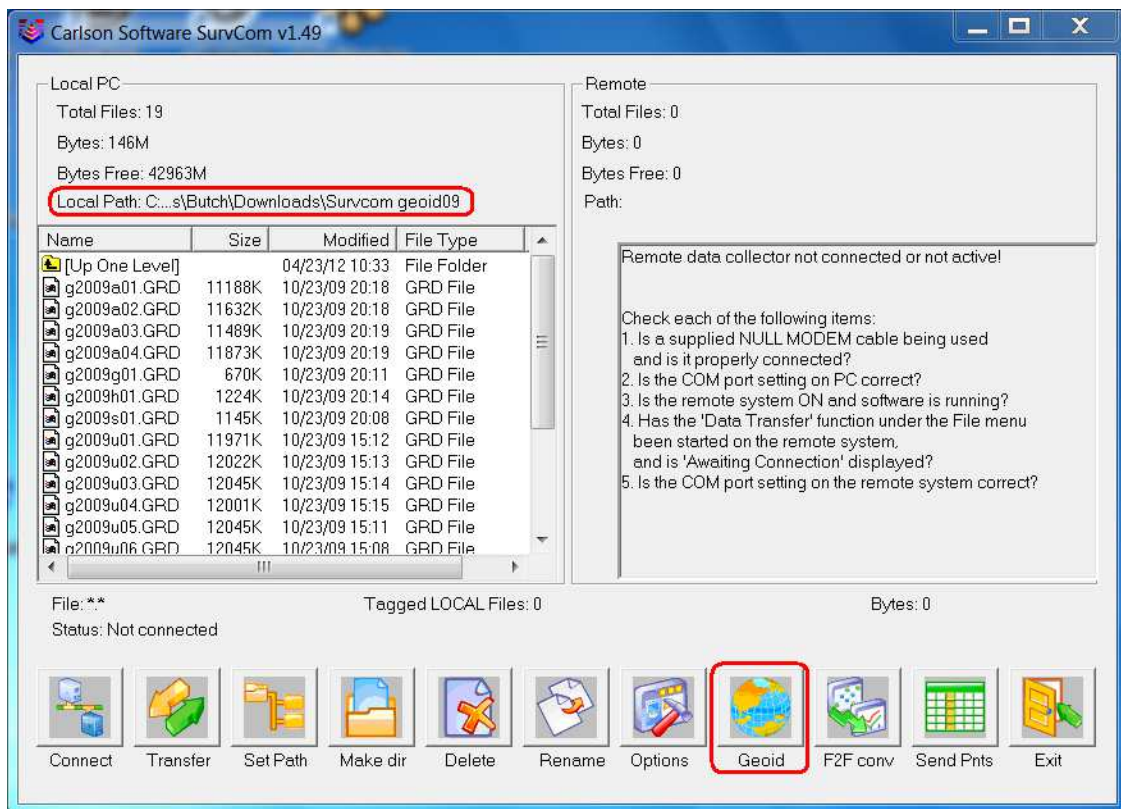
- 3) Close the SurvCOM Geoids folder and double-tap on the SurvCOM icon now located on your tablet's desktop.



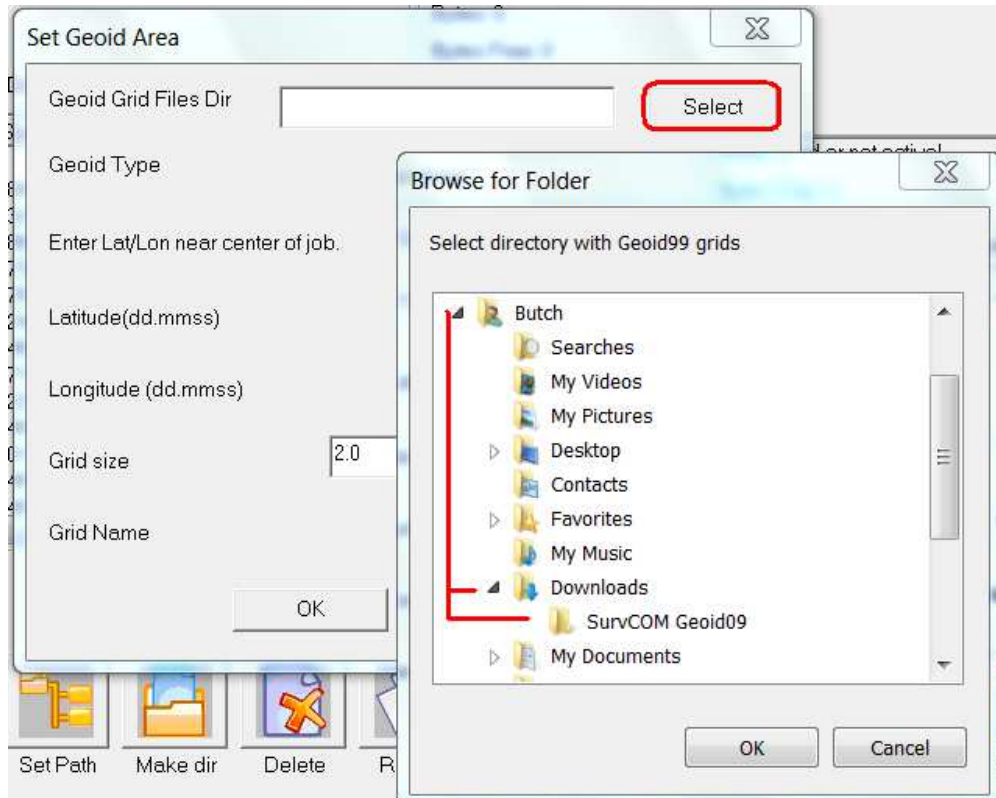
You will receive an initial communications failure; due to that fact that we are not working with an external device, like a data collector. Please ignore this message and click OK.



When SurvCOM opens, you will be presented with a window containing two “panes.” The left-hand pane shows the data that can be found on your PC; specifically, the geoid files and the path as to where they are located.



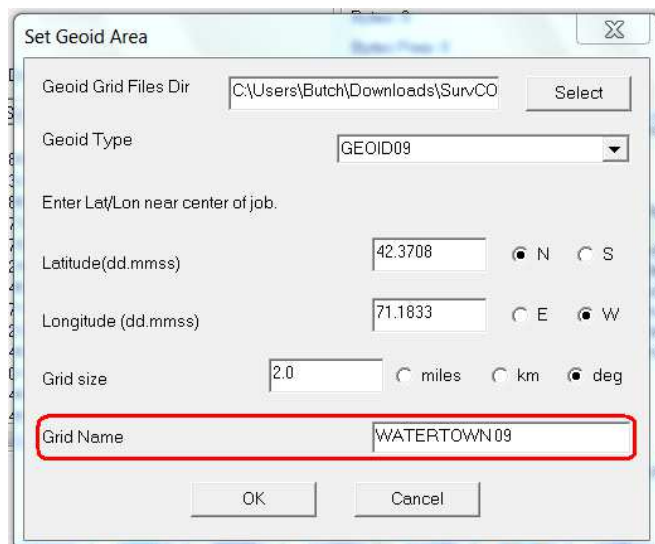
- 4) Please click on the GEOID button on the bottom right of the window. Then, click the Select button to and navigate to the “Geoid2012A” file in your Downloads folder. Click OK.



- 5) Now that the path to your grid files has been set, you may key in the Latitude & Longitude, Grid Size and name your file.

We recommend making the size 120 miles or 2 degrees {this will create a Geoid file with a 50mile Radius however we do allow up to 250 miles in size for a 125 mile radius}.

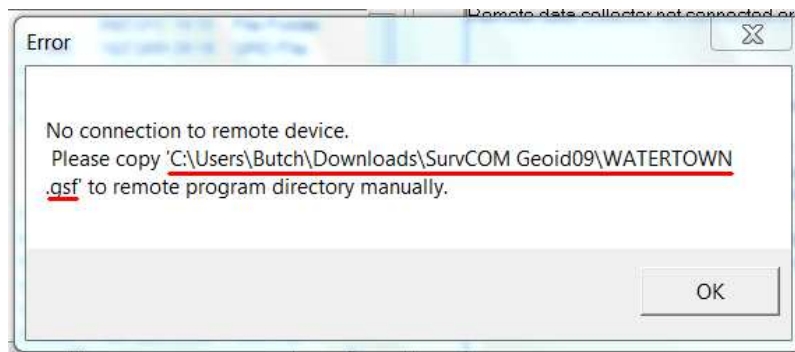
Make sure to type in a unique geoid name that relates to the centered location of the Lat / Long used to create it; such as the City Name and 12 for Geoid 12 {e.g., "BostonMA12"}.



- 6) Click OK to create your grid file.



You will receive an error message informing you that a connection to your data collector could not be made. We may ignore this, as we are creating a grid file for the Supervisor.



Please note the path to your newly created .gsf file, so that we may use it later in SurvPC.

- 7) Exit SurvCOM and launch SurvPC.
In the Equip tab, select Localization and then, tap the GPS tab.
Click on the "Geoid File" button to browse to, and load your gsf file.

